

[产品理念]
Product concept

创新

Innovation

品质创造未来

专注成就专业

Quality of Professional Achievement.
Focus on Professional Achievement.
Quality of Create the future.



炉温测试仪

Temperature testing instrument

蓝牙版 通用型

设备型号: KC8BU
测量范围: 0-500℃
测量精度: 1℃
工作电压: 3V
外形尺寸: 175 x 84 x 21mm(L x W x H)
内部温度保护: 可耐温100℃, 内部75℃自动保护

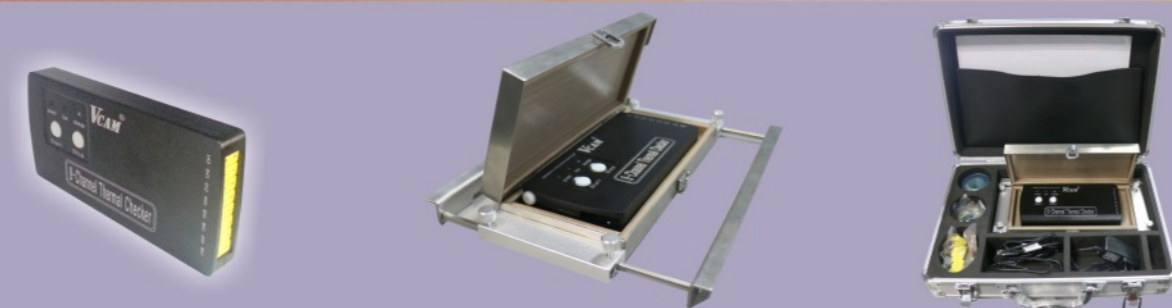
8 Zones Blue Tooth Model
Model NO.: KC8BU
Temperature Measurement Range: 0-500℃
Measurement Accuracy: 1℃
Power Supply: 3V
Dimensions: 175 x 84 x 21mm(L x W x H)
Automatic Internal Thermal Protection: Inner components can withstand 100℃, power will cut off automatically when component temperature reaches 75℃.



产品展示

人性化的软件分析 + 自带可调宽度载具
Inclusive of User-friendly analysis software and adjustable holder.

为您的波峰焊/回流焊温度监控, 管控工艺护航!
Precise wave soldering/reflow temperature monitoring & control ensure your process stability.



经济型

设备型号: KC6
测量范围: 0-500℃
测量精度: 1℃
工作电压: 3V
外形尺寸: 175 x 53 x 21mm(L x W x H)
内部温度保护: 可耐温100℃, 内部75℃自动保护

6 Zones Economy Model
Model NO.: KC6
Temperature Measurement Range: 0-500℃
Measurement Accuracy: 1℃
Power Supply: 3V
Dimension: 175 x 53 x 21mm(L x W x H)
Automatic Internal Thermal Protection: Inner components can withstand 100℃, power will cut off automatically when component temperature reaches 75℃.



吸嘴清洗机

Nozzle Cleaner

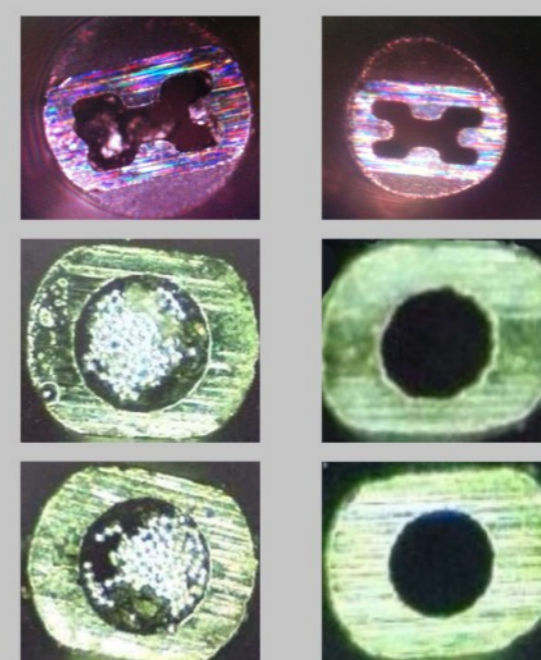
设备型号: VC-24P-I
进气压力: 0.5-0.65pa
喷射压力: ≤0.4pa
清洗数量: 24PCS/次
清洗溶液: 工业去离子水
工作电压: AC220-240V
外形尺寸: 520 x 480 x 380mm(L x W x H)

Model NO.: VC-24P-I
Compressed air: 0.5-0.65pa
Spray pressures: ≤0.4pa
Nozzle cleaning capacity: 24pcs/cycle
Cleaning agent: DI water
Power Supply: AC 220V / AC 240V
Dimension: 520 x 480 x 380mm(L x W x H)



清洗前后对比图

Cleaning before and after comparison chart



Before

After

产品描述:

采用超音速和高压原理, 雾化水冲洗吸嘴;
特制托盘用于不同的吸嘴品牌, 保护吸嘴反光板;
同时清洗24PCS, 提高工作效率;
工业去离子水, 循环使用, 降低成本, 减少污染;
多种语言可选, 满足不同客户需求;
人性化设计, 操作方便, 简单。

Product features:
Nozzle cleaning adopts ultrasonic and atomized high pressured water spray principle.
Various pallet designs dedicated for different nozzle brands to protect the nozzle reflector from damage.
Clean up to 24pcs nozzles at one time, improve working efficiency.
Recyclable DI water helps to reduce cost and pollution.
Multilingual interface to meet different customer needs.
User-friendly design with easy and fast operation.

全自动零件计数器

Automatic parts counters

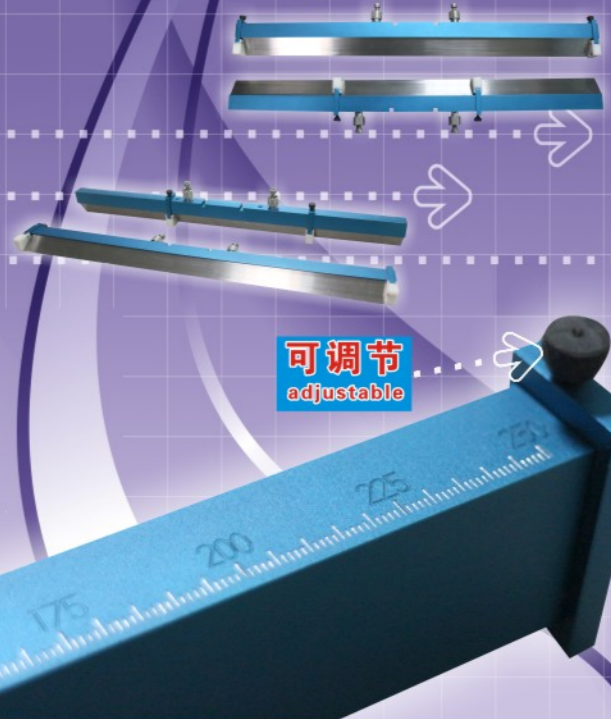
型号: JF-1000G
速度可调: 1-9级
计数范围: -10万—+10万
零件间隔: 02-56
料带宽度: 8-56
工作电压: AC110V 或 AC220V
产品特点: 可正反转, 自带打印功能。
外形尺寸: 300 x 250 x 200mm(L x W x H)

Model NO.: JF-1000G
Speed range: 1-9 Level
Counting range: -100,000 to +100,000
Component pitch: 02-56mm
Tape width: 8-56mm
Power Supply: AC 110V / AC 220V
Special feature: Clockwise & anticlockwise turning direction and inclusive of printing capability (printer is not included).
Dimensions: 300 x 250 x 200mm(L x W x H)



节能刮刀

Universal Squeegee



一省: 原基础上改动, 不报废旧座子。
二省: 任意尺寸的座子和刀片均共用。
三省: 更换机种无需换座子及刀片, 减少清洁次数。
四省: 挡块紧密贴合钢网, 省锡膏。

一改: 改善印刷品质。

四省一改, 成本工艺双管齐下!

Time & Cost saving features:
1. Direct modification on existing squeegees;
2. Supports all product dimensions;
3. No tooling-change required when change model.
4. Perfect fit between deflector & stencil, prevents leakage and minimizes solder paste wastage.

Improvement: Improve printing quality.

The above features enhance process and price performance at the same time!